

Super-lightweight framed formwork HANDI

The universal super-lightweight formwork for working without crane

Handi is a lightweight framed formwork system, which has been specially designed for quick and cost-saving construction. Thanks to its lightweight panels the forming process is effectively implemented by hand. Consequently, the Handi system suits best for forming of foundations, small aboveground and underground concreting work in projects with limited use of crane or without it and with difficulties in use of heavy framed formwork systems (e.g. Varimax system). In addition, it has made a good use in small projects such as villas, private houses, living compounds etc.

Load-bearing capacity:

- 35 kN/m² pressure of fresh concrete
- High quality film faced plywood with thickness of 15mm. Film weight 240g/m²

Cost-effective

- Universal application of the Handi system will give you an opportunity to use one system for variety of different tasks.
- Reduction of expenses due to minimization of crane usage.
- High number of use cycles means lower follow-up expenses.
- Reduction of expenses by means of restoration and cleaning possibilities.
- Galvanized or powder-coated steel frames, for long service life.
- High quality of concrete surface minimizes finishing work.

Areas of use of the Handi system:

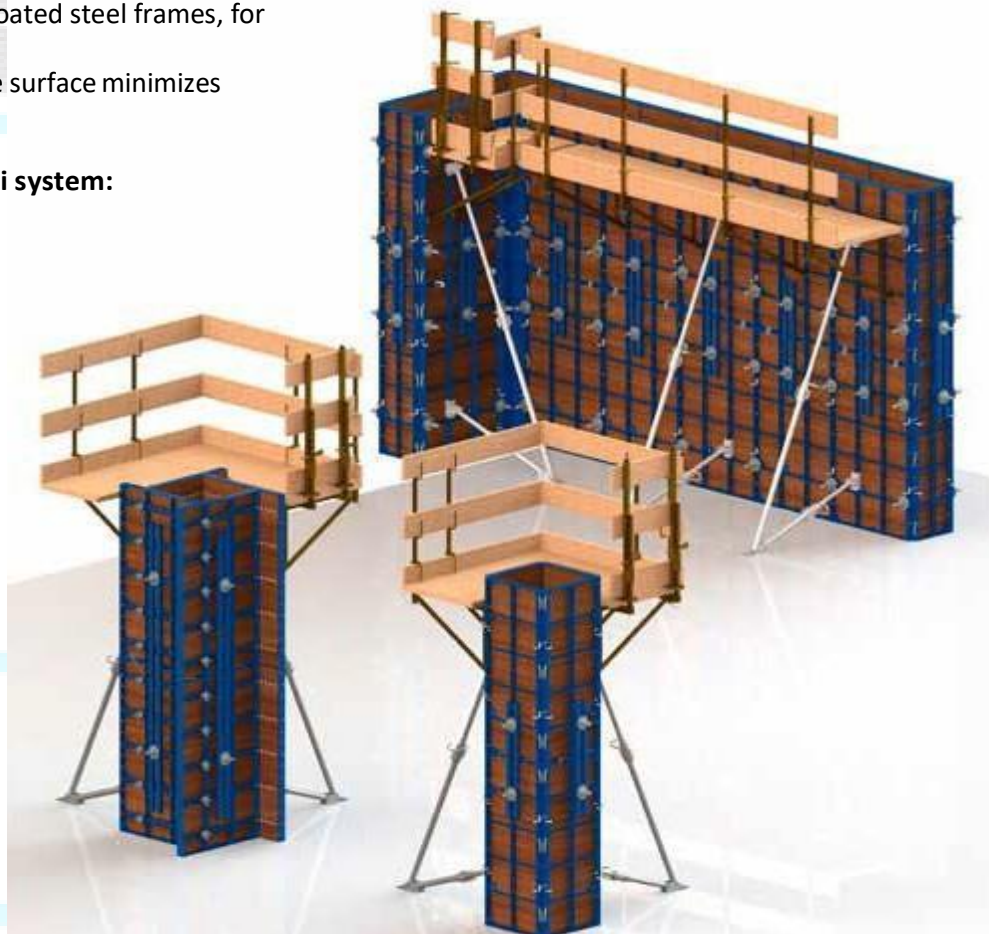
- Wall formwork
- Column formwork
- Foundation formwork

Easy to use

- Having a grid of standard panel sizes provides much easier planning and forming.
- All the connectors and accessories are easily fixed into the slots and quickly tighten, consequently forming time is efficient and maximized.
- Ergonomic of the system ensures fast and save assembly

Safe use

- Accessories such as — lifting hooks, wall brackets, supporting struts etc. make for save and easier handling of the system.

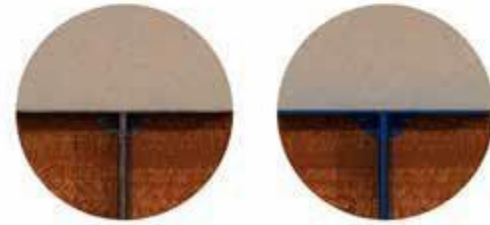


HANDI panels

The heights and widths of the Handi panels result in a logical and advantageous increment-grid. Small amount of different panels sizes makes planning easier and forming faster.

- 7 widths of panel
- 3 heights of panel
- 5 versatile panels

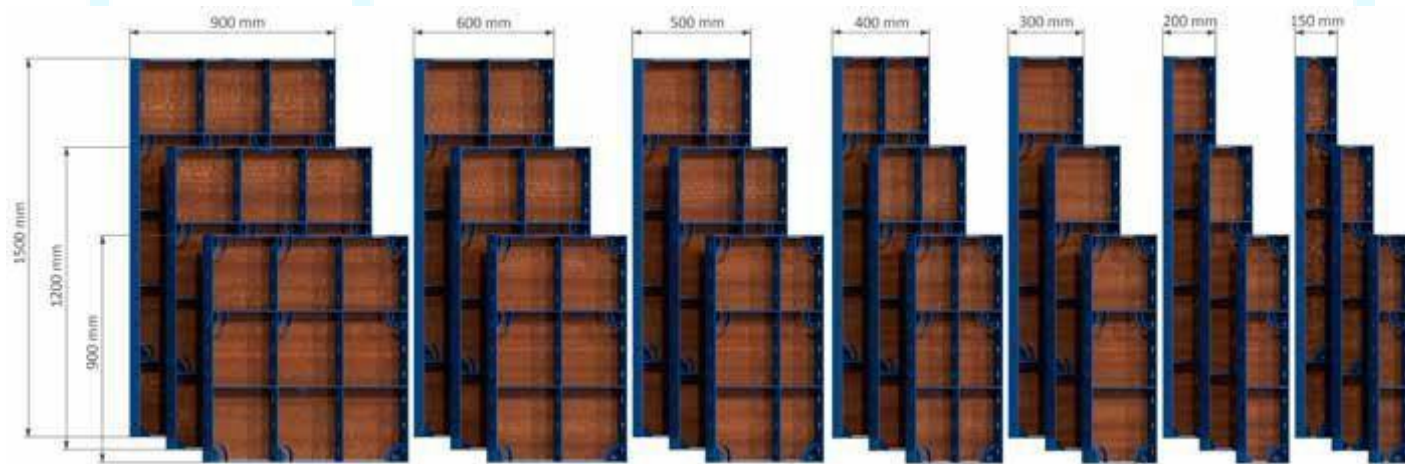
For any type and size of the panel two options of covering are available.



Galvanized

Powder-coated

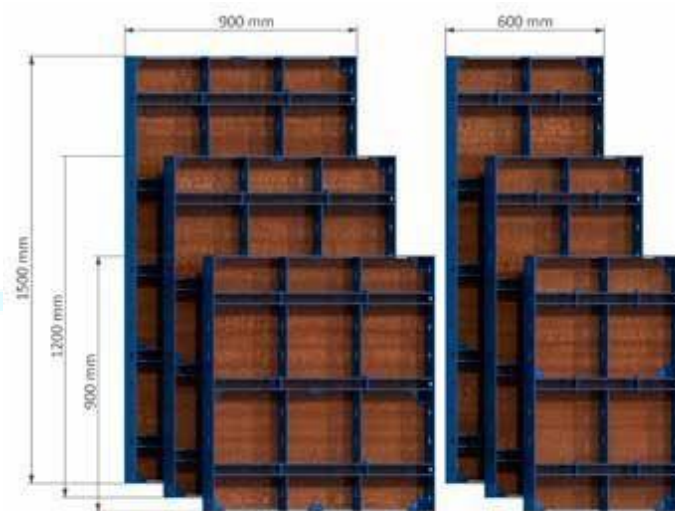
STANDARD PANELS



VERSATILE PANELS

The special hole pattern makes these panels particularly suitable for efficient forming of:

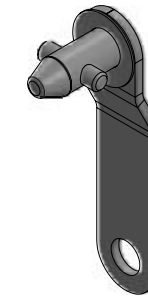
- Corners
- Wall junctions
- Columns



HANDI panel connection

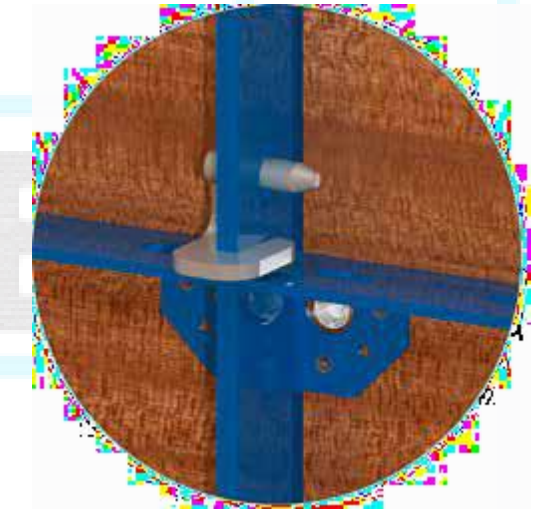
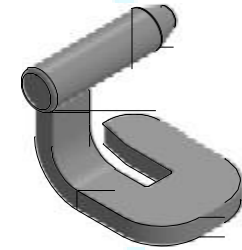
CLIP

For Handi panels connection use binding clip. Install the clip into the slot and turn it 90°- elements are firmly connected.



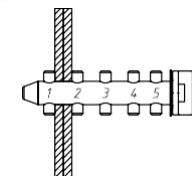
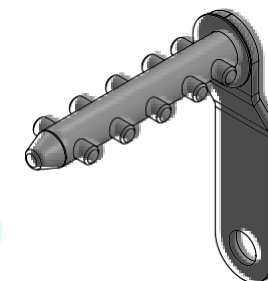
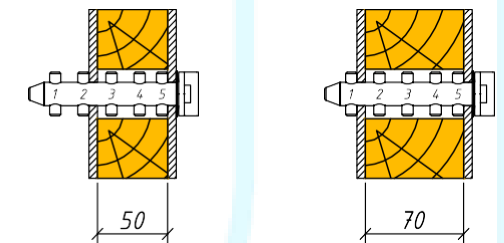
BINDING CLIP

For Handi panels connection binding clips can also be used.



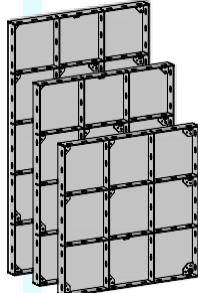
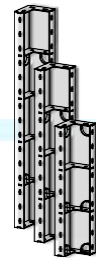
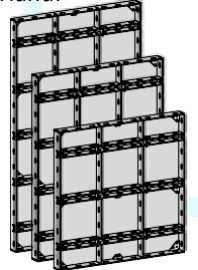
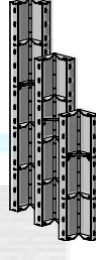
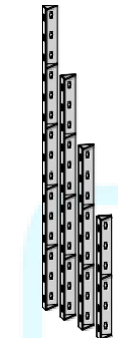
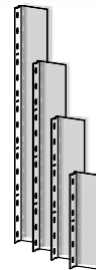
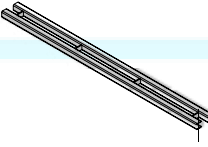
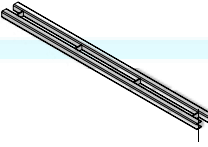
5-PIN CLAMP FOR COMPENSATION OF LINEAR EXTENSIONS

In case of compensation of linear extensions (1-7 cm) between the panels connect panels with 5-pin clamp. Installation of the 5-pin clamp is identical to the installation of the clip.



HANDI

HANDI

Item	[kg]	Article no	Item	[kg]	Articleno	
Standaard paneel Handi 	900x1500mm	54,10	Internal angle Handi 	200x900mm	21,07	SFB13 430
	600x1500mm	39,95		200x1200mm	28,70	SFB13 420
	500x1500mm	34,15		200x1500mm	35,64	SFB13 410
	400x1500mm	30,35				
	300x1500mm	22,48				
	200x1500mm	18,51				
	150x1500mm	16,60				
	900x1200mm	44,21				
	600x1200mm	30,96				
	500x1200mm	27,72				
	300x1200mm	18,24				
	200x1200mm	15,00				
	150x1200mm	13,44				
	900x900mm	34,58				
	600x900mm	23,98				
	500x900mm	21,78				
	Versatile paneel Handi 	900x1500mm-V		64,18	Joint angle Handi 	200x900mm
600x1500mm-V		45,21	200x1200mm	29,19		SFB13422
900x1200mm-V		52,51	200x1500mm	38,06		SFB13412
600x1200mm-V		36,92				
900x900mm-V		41,04				
600x900mm-V		28,83				
External angle Handi 		600mm	4,27	Expansionblock Handi 		600mm
	900mm	6,34	900mm		8,64	SFB13 630
	1200mm	8,42	1200mm		11,38	SFB13 620
	1500mm	10,52	1500mm		14,22	SFB13 610
Waling Handi 			Waling Handi 	500mm	4,67	SFB13 505
				600mm	5,57	SFB13 506
				800mm	7,40	SFB13 508
				1000mm	9,37	SFB13 510
				1500mm	13,86	SFB13 515
				2000mm	18,50	SFB13 520
				2500mm	23,05	SFB13 525
				3000mm	27,57	SFB13 530
				3500mm	32,07	SFB13 535
				4000mm	36,69	SFB13 540
		4500mm	41,28	SFB13 545		

Opties:
 xxxxx000 - Poedercoating;
 xx xxx 100 - Verzinkt;
 xxxxx 200 - Hot Dip Verzinkt;
 Maatwerk;

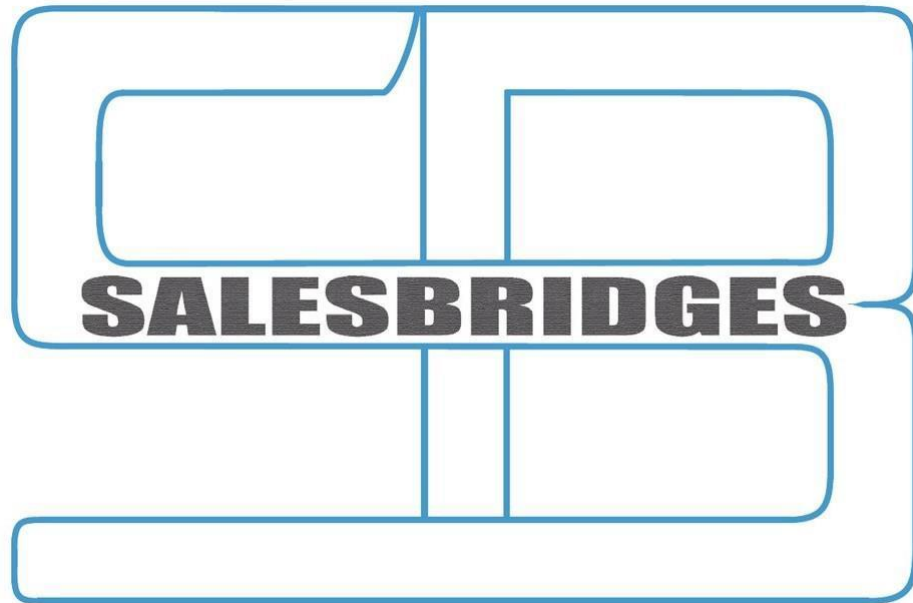
Opties:
 xxxxx000 - Poedercoating;
 xx xxx 100 - Verzinkt;
 xxxxx 200 - Hot Dip Verzinkt;
 Maatwerk;

Opties:
 xxxxx000 - Poedercoating;
 xx xxx 100 - Verzinkt;
 xxxxx200 - Hot Dip Verzinkt;
 Maatwerk;

Supporting strut 250 Handi	21,85	SBF13 702	Stop-end plate Handi 6x75x750	2,36	SBF13 716
Supporting strut 340 Handi			Plastic cone	0,005	
Tie rod 15,00 mm	0.50m	0.80	SBF92 050		
	0.75m	1.20	SBF92 075		
	1.00m	1.60	SBF92 100		
	1.25m	2.00	SBF92 125		
	1.50m	2.40	SBF92 150		
	1.75m	2.80	SBF92 175		
	2.00m	3.20	SBF92 200		
	2.25m	3.60	SBF92 225		
	2.50m	4.00	SBF92 250		
	2.75m	4.40	SBF92 275		
	3.00m	4.80	SBF92 300		
Lifting hook Handi	2,88	SBF13 706			
Star-shaped nut			SBF13STR		
Superplate 15.0			SBF13SPR		

Contact

Het universeel super-lichtgewicht bekistingssysteem voor werken zonder kraan



SALESBRIDGES BV
Leidsestraat 126, 2182DS, Hillegom, The Netherlands
sales@salesbridges.nl
+31652883848